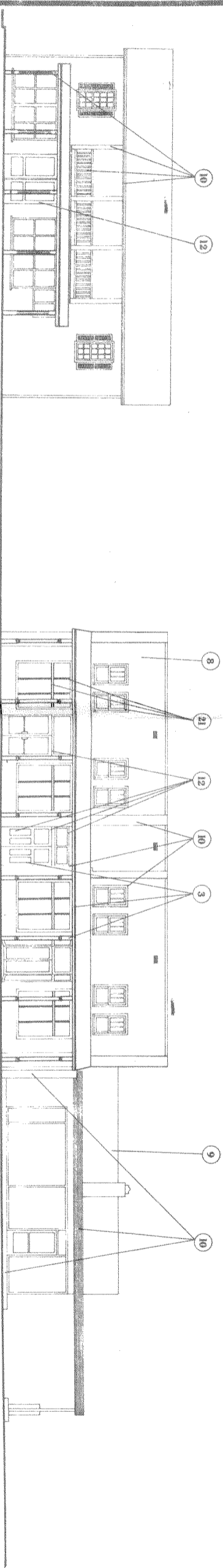


**MAIN ST.-NORTH SIDE**

- |                                |                        |
|--------------------------------|------------------------|
| ① Russell-Valley House, Geesun | ⑭ Georgia House, Ivory |
| ② Palmer House, Geesun         | ⑮ Revco's Reviter      |
| ③ Brevard House, Geesun        | ⑯ Campbell's Olive     |
| ④ Ludwell, Telemont Sarg       | ⑰ Old Mill Bed         |
| ⑤ Archibald, Park Geesun       | ⑱ Thurston's Bed       |
| ⑥ Greenhouse, Palace, Tex      | ⑳ Gavens, Pittman      |
| ⑦ Brevard House, Burt, Savan   | ㉑ Opp White            |
| ⑧ Georgia House, Ivory         |                        |
| ⑨ Motel Shop, Fawn             |                        |
| ⑩ Ludwell, Telemont Sarg       |                        |
| ⑪ Campbell's Olive             |                        |
| ⑫ Old Mill Bed                 |                        |
| ⑬ Thurston's Bed               |                        |
| ⑭ Gavens, Pittman              |                        |
| ⑮ Opp White                    |                        |



**MAIN ST.-SOUTH SIDE**



PREPARED BY ERI  
SCHOOL OF ENVIRONMENTAL DESIGN  
UNIVERSITY OF GEORGIA  
ATHENS, GEORGIA

**DAHLONEGA, GEORGIA**  
REHABILITATION STUDY

SENIOR TERMINAL PROJECT    SUMMER 1970  
PRESENTED BY:    H. ALAN BRADOCK  
DON W. CANEPP    JOHN F. BRANSON  
FACILITY ADVISORS:    HERBERT B. OWENS  
ALLEN D. STOWALE    JOHN C. WATERS

**PROPOSED FACADES**  
SHEET **18** OF **25**